

# E-Class™ Mark II

## Barcode Desktop Printers ■ ■ ■



### features at a glance ■ ■ ■

- **Small footprint** to fit on any desktop or counter and open more work space
- **Two colors to choose from**, cool grey or warm white
- **Unique print mechanism** designed to print on thick materials and correct material curvature due to being wound on a roll
- **Communications galore!** The E-Class *Mark II* leads the desktop printer market with the most communications ports in one product: serial, parallel and USB come standard, internal Ethernet and wireless Ethernet are optional
- **Printhead adjustment dial** controls the amount of pressure the printhead applies to the printable media to ensure the highest possible print quality on narrow to wide media
- **Adjustable media sensor option** widens the printing capabilities with movable index sensors to print on the oddest shaped labels or tags with non-standard shapes and oddly placed index marks or backside printing
- **Field installable options** such as cutters, present sensors, and thermal transfer can be added easily to upgrade a base printer
- **Label peeler** separates the label from the liner making it ideal for use in semi-automated operations like manufacturing product identification, shipment labeling, and inventory identification; use with a present sensor to automate dispensing

The E-Class *Mark II* thermal desktop printer offers a proven and reliable label and tag printing solution in a compact footprint. It is ideal for a vast number of diverse applications that require a dependable and cost effective barcode printer. The E-Class has a uniquely designed adjustable print mechanism with advanced media sensing.

The E-Class is more than a shipping or address label printer; it is uniquely designed to reliably print on the tough durable materials needed in many applications. Whether the E-Class is printing crystal clear durable jewelry tags or high resolution tough product serial labels, the E-Class delivers what is normally expected from much more expensive printers. The E-Class is a reliable and cost effective printer that many large and small businesses around the world rely on for all their barcode label and tagging needs.

### popular applications ■ ■ ■



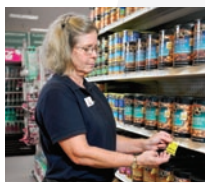
#### Manufacturing

- Product Labels
- Work in Progress
- Repairs Tracking
- Agency Labels
- Instructions Labels



#### Healthcare

- Specimen Tracking
- Records Labeling
- Patient ID Wristbands
- Asset Identification
- Pharmacy



#### Retail

- Item Labels
- Shelf Tags
- Specials and Talkers
- Returns Labeling/ Tagging



#### Postal Service

- Shipping Labels
- Parcel Routing
- Delivery Management

### your benefits ■ ■ ■

**Increased productivity** – The new E-Class *Mark II* keeps up with high label demand applications, boasting 33% faster print speed and 66% faster throughput than its predecessor.

**Easy on the budget** – When it comes to big performance in a small package, there is just one choice - the E-Class *Mark II* family of printers is the most affordable entry-level printing solution available.

**One printer does it all** – The E-Class *Mark II* allows you to easily switch media for different applications. Using the same versatile printer throughout your facility gives you the option to move printers where they are needed.



#### Did you know?

Using quality labels and ribbons can significantly prolong the life of your printhead. Datamax-O'Neil offers a wide variety of high quality media for its printers including custom labels, stock labels, ticketing media, ribbons and cleaning products. When you choose Datamax-O'Neil, you receive a proven commitment to superior quality. Quality that results in performance and compatibility... Guaranteed.



datamax • o'neil  
right by our customers.

# product specifications ■ ■ ■

## at a glance

Print technology  
Print width (maximum)  
Print speed  
Resolution

## E-4205e

Direct thermal / Thermal transfer (optional)  
4.25" (108mm)  
5 IPS (127 mm/s)  
203 DPI (8 dots/mm)

## E-4304e

Direct thermal / Thermal transfer (optional)  
4.12" (106mm)  
4 IPS (102 mm/s)  
300 DPI (12 dots/mm)

## print technology ■ ■ ■

- Print length range:
  - 0.375" - 100" (9.5mm - 2540mm)
  - min length of 1.25" (31.8mm) with optional cutter installed

## physical characteristics ■ ■ ■

- Dimensions:
  - 7.05" H x 8.77" W x 10" D (179mm H x 223mm W x 254mm D)
- Weight:
  - 5.2 lbs. (2.4kg)
- Color:
  - Available in light or dark case colors
- Operating temperature:
  - 40°F to 95°F (4°C to 35°C)
- Construction:
  - Cantilevered full access printhead with die cast metal frame
  - Plastic shell, clear top window to easily monitor media supply levels
- Power source:
  - External auto-ranging power supply; specify appropriate power cord when ordering

## integration ■ ■ ■

- Communication ports:
  - Standard: USB, Parallel Centronics®, Serial RS232 (DB-9) up to 38,400 BPS
  - Optional: Internal Ethernet 10/100 Base-T Fast Ethernet, Internal 802.11b/g wireless LAN with WPA security (WEP 64, 128, PSK; WPA LEAP, 64, 128; PSK64, 128; TKIP+40, +128)
- Software
  - DMX Config: Complete printer setup utility
  - DMX NetManager
  - Embedded Network Web Pages
  - Windows Drivers - NT, XP, Vista
- Firmware
  - Updates: Regular updates available online
  - Universal printer command language (PLZ, PLI, PLB)



### Looking for a portable receipt or label printer?

Mobile workers will appreciate the reliable performance, rugged design and outstanding print quality that Datamax-O'Neil portable printers are known for around the world. Our line of portable receipt and label printers are perfect for the most challenging route accounting, field service and retail applications.



## barcodes/fonts/graphics ■ ■ ■

- Memory:
  - 4MB Flash (8MB optional); 16MB SDRAM
- Barcodes:
  - Linear: Code 3 of 9, UPC-A, UPC-E, Interleaved 2 of 5, Code 128, EAN-8, EAN-13, HIBC, Codabar, Plessey, UPC 2 and 5 digit addendums, Code 93, Postnet, UCC/EAN Code 128, Telepen
  - 2D Symbolologies: MaxiCode, PDF417, USD-8, Datamatrix, QR Code, Aztec, TLC 39, Micro PDF417
- Resident fonts:
  - Ten alphanumeric fonts from 0.08" (2mm) to 0.25" (6mm) including OCR-A, OCR-B, CG Triumvirate™ smooth font from AGFA®
- Downloadable font types:
  - True-Type, Bitmap
- Character set:
  - Modified IBM® Code Page 850; includes characters for English and most European, Scandinavian and Spanish speaking countries. Scalable fonts can be used with over 50 resident character sets
- Font expansion/rotation:
  - All fonts expandable vertically and horizontally up to 24x; fonts and graphics can be printed in four directions: 0°, 90°, 180° and 270°s
- Graphics supported:
  - .PCX, .BMP and .IMG files
- Reversible field/mirror image
  - Any font or graphic field can be printed as a normal or reverse image

## agency approval ■ ■ ■

Contact sales manager for the most current list

## warranty ■ ■ ■

- Printer:
  - 1 year factory warranty covers parts, labor, and return shipment
- Printhead:
  - 1 year or 1,000,000 inches whichever comes first; factory warranty covers parts, labor, and return shipment
- Extended warranty available by quote

## media ■ ■ ■

- Media type:
  - Roll-fed: 5" (127mm) max OD; 1" (25.4mm) min core ID
  - Fan-fold materials
  - Die-cut or continuous labels
  - Perforated or continuous tag/ticket stock
- Media width:
  - 0.75" – 4.3" (19.0mm – 109.2mm)
- Media thickness range:
  - 0.0025" - 0.01" (0.0635 - 0.254 mm)
- Media sensing:
  - Fixed position or optional position adjustable sensors capable of gap between labels, black bar on back, and notch or hole sensing
- Label backfeed:
  - Backfeed action returns printer to top of form before printing and allows for easy tear off or using the optional cutter.
- Ribbon:
  - Industry standard ribbon widths; 0.5" (13mm) ribbon core, 361' (110M) in length

## options ■ ■ ■

- Thermal transfer (field or factory installed)
- High resolution (300 dpi) - available in both direct thermal and thermal transfer
- Internal Ethernet 10/100 Base-T Fast Ethernet
- Internal 802.11b/g wireless LAN with WPA security
- Expanded Flash memory (8MB)
- Adjustable left-to-right media indexing sensor
- Label present sensor (upward or downward looking)
- Standard cutter
- International fonts\*
- Real time clock (with expanded memory)

## accessories ■ ■ ■

- Battery pack
- External rewinder
- External media supply stand



datamax • o'neil  
right by our customers.

A DOVER Company

[www.datamax-oneil.com](http://www.datamax-oneil.com)

\* Some fonts may require expanded memory. Specifications subject to change without notice. Copyright 2009, Datamax-O'Neil (rev. 20090723)



## About BarcodesInc

### Who We Are

BarcodesInc is North America's leading provider of barcode and mobile computing solutions. We are a leading provider of barcode and mobile computing solutions. We are a leading provider of barcode and mobile computing solutions.

### We Owe Our Success To You

Our success is due to the support and trust of our customers. We are committed to providing the highest quality products and services to our customers.

## Why Choose BarcodesInc?

### Dedicated Account A UbU Yf

Our Account Managers will not compromise when it comes to providing you top-notch service. Your Account Manager is the primary point of contact for your business and makes it a priority to get to know you, your company and all your needs.

### Highly-Trained Technical Support

Our technical staff has the broadest knowledge and every significant certification in the industry. One of our friendly experts is always available to suggest products and solutions for any situation.

### Incredible Value

Our purchasing power means big savings for you. Whatever your project, our team will work hard to deliver a solution that fits your budget.

### Largest Inventory in the Industry and Same-Day Shipping

Whatever your barcoding, mobile computing, or printing needs, we will fill your order and ship it the same day.

### Premier Access to Top Manufacturers

BarcodesInc maintains strong strategic partnerships with the leading manufacturers in barcoding, mobile computing, printing and RFID.

### Responsive Customer Service

Every phone call and email is responded to promptly, completely and accurately by our customer service team.

### Easy Returns

Damaged, defective or incorrectly ordered goods may be returned without hassle.

## BRANDS



AND MORE